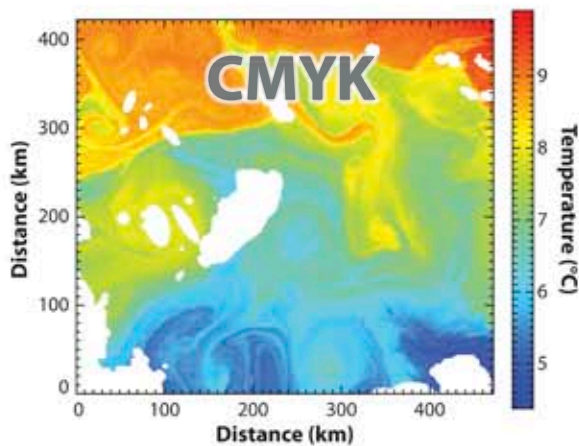
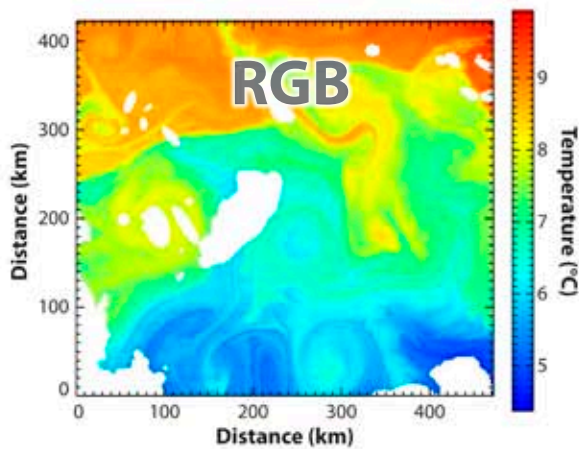




RGB and CMYK color spaces



Display devices such as computer monitors typically define colors using RGB, the primary colors of light (red, green, blue). This additive color model is based on mixing different wavelengths of light in the visible spectrum.

Annual Reviews' figures are printed in CMYK (cyan, magenta, yellow, and black), the primary colors of ink used for offset printing. This subtractive color model is based on mixing these four pigments to produce the full spectrum.

RGB has a larger gamut than CMYK—meaning that more colors can be created by mixing light than we can with available pigments. Monitors can display millions of colors, whereas printing presses use different percentages of C, M, Y, and K to match colors as accurately as possible.

Images originally created in the RGB color space may look slightly different in print, especially in the blue-green region of the spectrum.